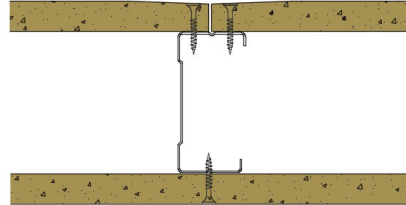


PSHD70-K-63 - SPEEDLINE System Data Sheet - Version V1 (24-10-23)

SPEEDLINE 70mm Heavy Duty 'C' Stud Partition
@600mm Ctrs, with Knauf 15mm Impact Panel
each side



System Performance Breakdown

Fire Resistance:

BS476 Part 22:1987:

Test Ref:

Max Height:

Thickness:

Duty Grade: BS 5234: Part 2:1992:

Sound Insulation:

60/60 Minutes (Integrity/Insulation).

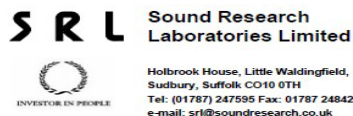
BRE Report P102396-1011B

Refer to Speedline Specification Clause

102 mm. (At Base Track, Excluding Finishes)

Severe - Annexes A-F

39 R_wdB, Date Tested or Assessed Against - 23/10/2008

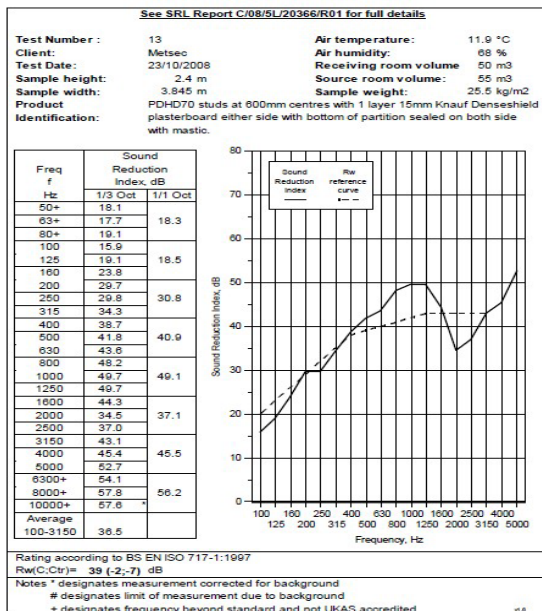


Test Certificate No. 5340

Contract: C/08/5L/20366

Page: 1 of 1

Date: 27 January 2009



TESTED AT ONE OF THE UKAS ACCREDITED LABORATORIES BELOW

B.T.C
(H-Ref on Graph)

B.R.E

AIRO

S.R.L

George Thomson

George Thomson
Project Engineer

Trevor Hickman

Trevor Hickman
Technical Manager

SPEEDLINE Drywall Systems, Adsetts House, 16 Europa View, Sheffield Business Park, Sheffield, S9 1XH.

Tel: 0114 231 8030.

Email: enquiries@speedlinedrywall.co.uk

(As per the requirements set out in ISO/IEC 17025:2017 regarding test data the results stated have been carried out by voestalpine Metsec plc as part of the contract to supply Speedline Metal Sections to SIG Plc)