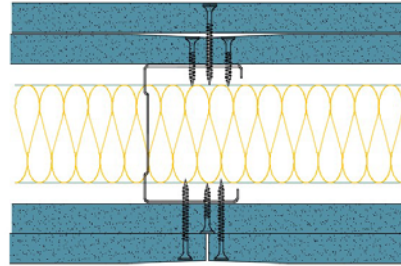


AS70-S-160(50) - SPEEDLINE System Data Sheet

SPEEDLINE 70mm Acoustic 'C' Stud Partition
 @600mm Ctrs, with 2x Siniat GTEC 15mm dB
 Board each side, 50mm APR



System Performance Breakdown

Fire Resistance:

BS476 Part 22:1987:

Test Ref & Date or Applied Ref & Report:

Max Height:

Thickness:

Duty Grade: BS 5234: Part 2:1992:

Sound Insulation:

90/90 Minutes (Integrity/Insulation).

BRE-P100456-1085 - 50-S-60

Refer to Speedline Specification Clause

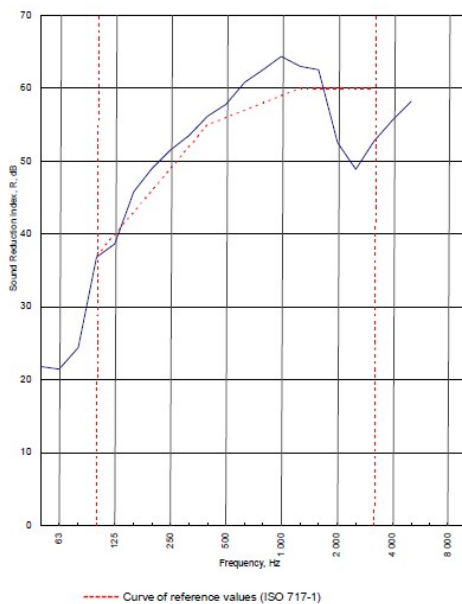
132 mm. (At Base Track, Excluding Finishes)

Severe - Annexes A-F

56 R_w dB, -4Ctr Date Tested or Assessed Against - 02/11/2012

Test Code:
H18035AA
 Test Date:
02/11/2012

Freq. Hz	R dB
50	21.8
63	21.5
80	24.4
100	36.8
125	38.7
160	45.8
200	49.0
250	51.5
315	53.6
400	56.2
500	57.7
630	60.9
800	62.6
1 000	64.4
1 250	63.0
1 600	62.5
2 000	52.5
2 500	48.9
3 150	52.8
4 000	55.7
5 000	58.2
6 300	
8 000	
10 000	



Rating according to BS EN ISO 717-1:1997 **R_w (C;Ctr) = 56 (-2;-4) dB**
 Max dev. 11.1 dB at 2 500 Hz

Evaluation based on laboratory measurement results obtained by an engineering method:

C_{50-500} = -5 dB	$C_{50-5000}$ = -5 dB	$C_{100-5000}$ = -2 dB
$C_{50-50-150}$ = -16 dB	$C_{50-50-500}$ = -16 dB	$C_{50-100-5000}$ = -4 dB

TESTED AT ONE OF THE UKAS ACCREDITED LABORATORIES BELOW

B.T.C (H-Ref on Graph)

B.R.E

AIRO

S.R.L

Customer: **Metsec plc Hepsec Division**



BTC 18035A: Page 9 of 11

SPEEDLINE Drywall Systems, Adsetts House, 16 Europa View, Sheffield Business Park, Sheffield, S9 1XH.

Tel: 0114 231 8030. Fax: 0114 231 8031

Email: enquiries@speedlinedrywall.co.uk

(As per the requirements set out in ISO/IEC 17025:2017 regarding test data the results stated have been carried out by voestalpine Metsec plc as part of the contract to supply Speedline Metal Sections to SIG Plc)