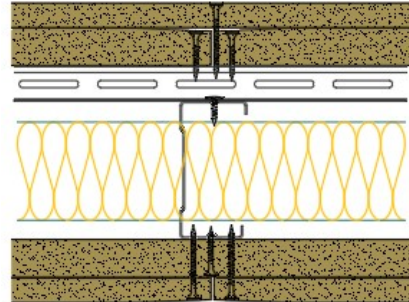


## RB70-S-76(50) - SPEEDLINE System Data Sheet

SPEEDLINE 70mm 'C' Stud Partition with Resbar  
@600mm Ctrs, with Inner Siniat GTEC 19mm  
Plank, Outer Siniat GTEC 12.5mm Standard Board  
each side, 50mm APR



### System Performance Breakdown

Fire Resistance:

BS476 Part 22:1987:

Test Ref & Date or Applied Ref & Report:

Max Height:

Thickness:

Duty Grade: BS 5234: Part 2:1992:

Sound Insulation:

**60/60 Minutes (Integrity/Insulation).**

**- BRE Report P102396-1000C**

**Refer to Speedline Specification Clause**

**150 mm.** (At Base Track, Excluding Finishes)

**Severe - Annexes A-F**

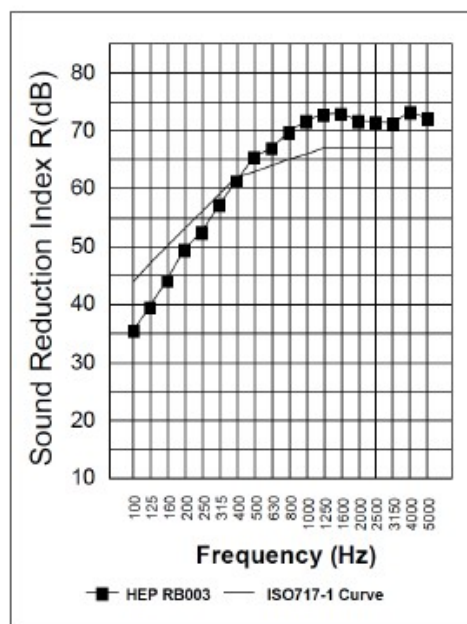
**63  $R_w$ dB, -10Ctr** Date Tested or Assessed Against -

#### Sound Insulation

Freq.(Hz)	R(dB)
100	35.5
125	39.6
160	44.1
200	49.5
250	52.5
315	57.4
400	61.5
500	65.5
630	66.9
800	69.7
1000	71.8
1250	72.8
1600	73.1
2000	71.7
2500	71.6
3150	71.3
4000	73.2
5000	72.2

$R_w$       **63**

$R_w + Ctr$     **53**



TESTED AT ONE OF THE UKAS  
ACCREDITED LABORATORIES  
BELOW

B.T.C  
(H-Ref on Graph)

B.R.E

AIRO

S.R.L

