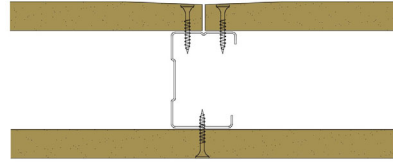


## **50-S-52 - SPEEDLINE System Data Sheet - Version V1 (24-10-23)**

SPEEDLINE 50mm 'C' Stud Partition @600mm Ctrs,  
 with Siniat GTEC 15mm Standard Board each side



### **System Performance Breakdown**

Fire Resistance:

BS476 Part 22:1987:

Test Ref & Date or Applied Ref & Report:

Max Height:

Thickness:

Duty Grade: BS 5234: Part 2:1992:

Sound Insulation:

**NA/NA** Minutes (Integrity/Insulation).

- **BRE Report P102396-1011C**

**Refer to Speedline Specification Clause**

**82 mm.** (At Base Track, Excluding Finishes)

**Heavy - Annexes A-F**

**NA R<sub>w</sub>dB**, Date Tested or Assessed Against -

TESTED AT ONE OF THE UKAS  
 ACCREDITED LABORATORIES  
 BELOW

B.T.C  
 (H-Ref on Graph)



B.R.E



AIRO



S.R.L

