



Wall Lining Systems

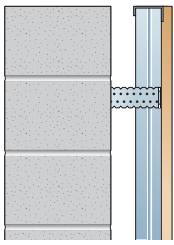
Wall Lining Systems

INTRODUCING WALL LINING SYSTEMS

Speedline offers a full range of Metal Frame Wall Lining Systems for use in commercial, education, health & domestic situations. The following section provides details of system applications as well as best practice construction guidance.

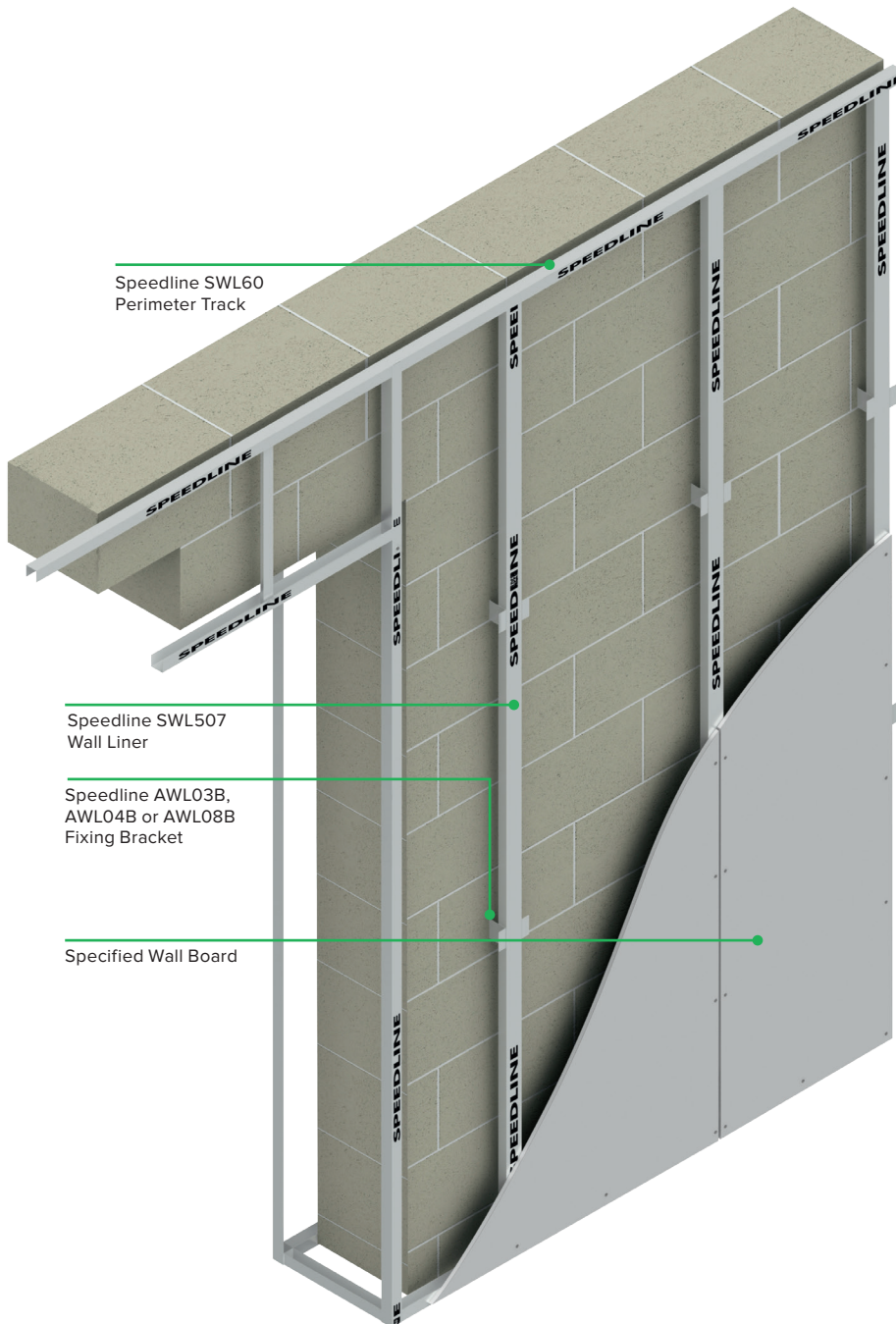
Contact the Speedline Technical team for advice and support on your project:

enquiries@speedlinedrywall.co.uk



WALL LINING SYSTEMS

SPEEDLINE WALL LINER SYSTEM



Speedline SWL60
Perimeter Track

Speedline SWL507
Wall Liner

Speedline AWL03B,
AWL04B or AWL08B
Fixing Bracket

Specified Wall Board

Benefits

A completely dry system using secure mechanical fixings

- Services can be accommodated within the cavity.
- Can be used to improve sound insulation properties of the substrate.
- With the addition of Speedline Thermal Laminates thermal performance of the substrate can be improved.
- Can be used where plaster or Direct Bond systems are not suitable.
- Provides a flat, level surface whilst dealing with background irregularities.

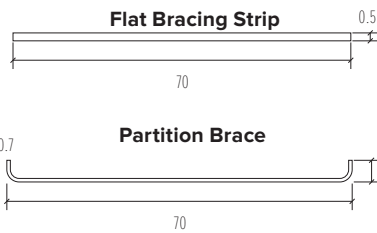
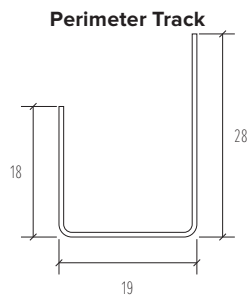
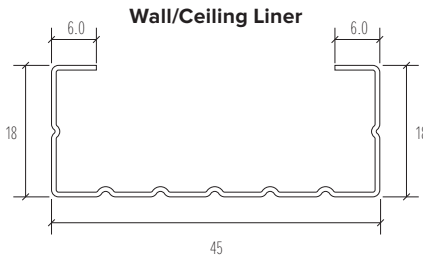
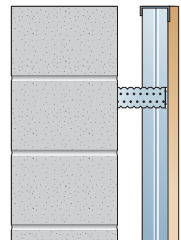
Quick, simple and cost-effective to use, Speedline Wall Liner System is suitable for internal use in all commercial and domestic applications.

It can be used to provide a lining onto most masonry backgrounds, uneven walls and for concealing services within the cavity. With a range of fixing brackets available, cavities from 25mm up to 180mm can be formed.


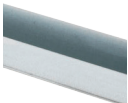
Prior to installing Speedline Wall Liner System within older buildings, ensure the substrate is sound and free of any damp.

Sectors



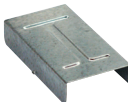
- Student Accommodation
- Hotels
- Healthcare
- Education
- RMI
- Residential
- Commercial



SPEEDLINE WALL LINER SYSTEM

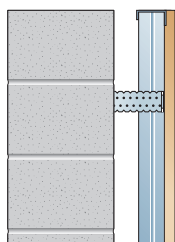
	Product Code	Product Description	Stock Lengths Metre	Weight per Length Kgs
	SWL507	Speedline Wall/Ceiling Liner x 0.5mm	2.40	0.83
			2.70	0.94
			3.00	1.04
			3.60	1.24
	SWL60	Speedline Perimeter Track x 0.5mm	3.00	0.74

SPEEDLINE ACCESSORIES (WALL LINER SYSTEM)

	Product Code	Product Description	Weight per Box Kgs
	AWL03B	Fixing Bracket – 75mm leg	3.70
	AWL04B	Fixing Bracket – 125mm leg	5.60
	AWL08B	Fixing Bracket – 175mm leg	7.50
	AWL05B	Wall/Ceiling Liner Connector	1.35

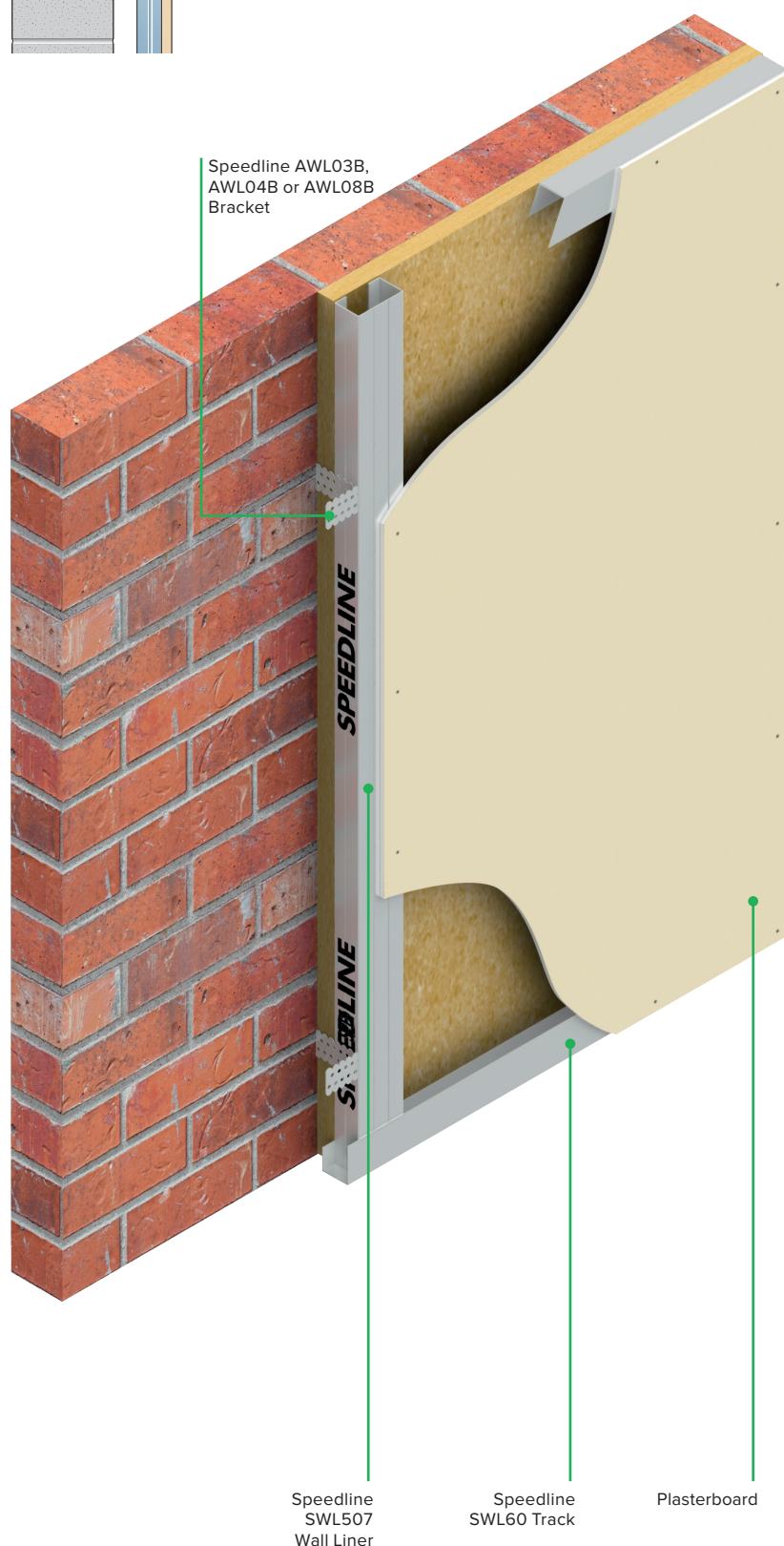
SPEEDLINE BRACING STRIP & PARTITION BRACE

Product Code	Product Description	Stock Lengths Metre	Weight per Length Kgs
FS24	Flat Bracing Strip 70 x 0.5mm	2.40	0.66
PB24	Partition Brace 70 x 10 x 0.7mm	2.40	1.08



WALL LINING SYSTEMS

SPEEDLINE WALL LINER SYSTEM



Construction

Establish depth of cavity required and fix Speedline SWL60 Perimeter Track at maximum 600mm centres, SWL60 should be positioned so that the longest leg is facing the room.

Mark vertical lines at maximum 600mm centres to correspond with position of Speedline SWL507 Wall Liner centres. Devide vertical lines by 800mm to indicate fixing point for Speedline AWL03B, AWL04B or AWL08B Fixing Brackets. Drill a 6mm diameter hole and fix brackets into position using Speedline Metal Nail In fixings.

Cut SWL507 Wall Liner to length and friction fit into track. To extend SWL507 Wall Liner use Speedline AWL05B Wall Liner Connectors.

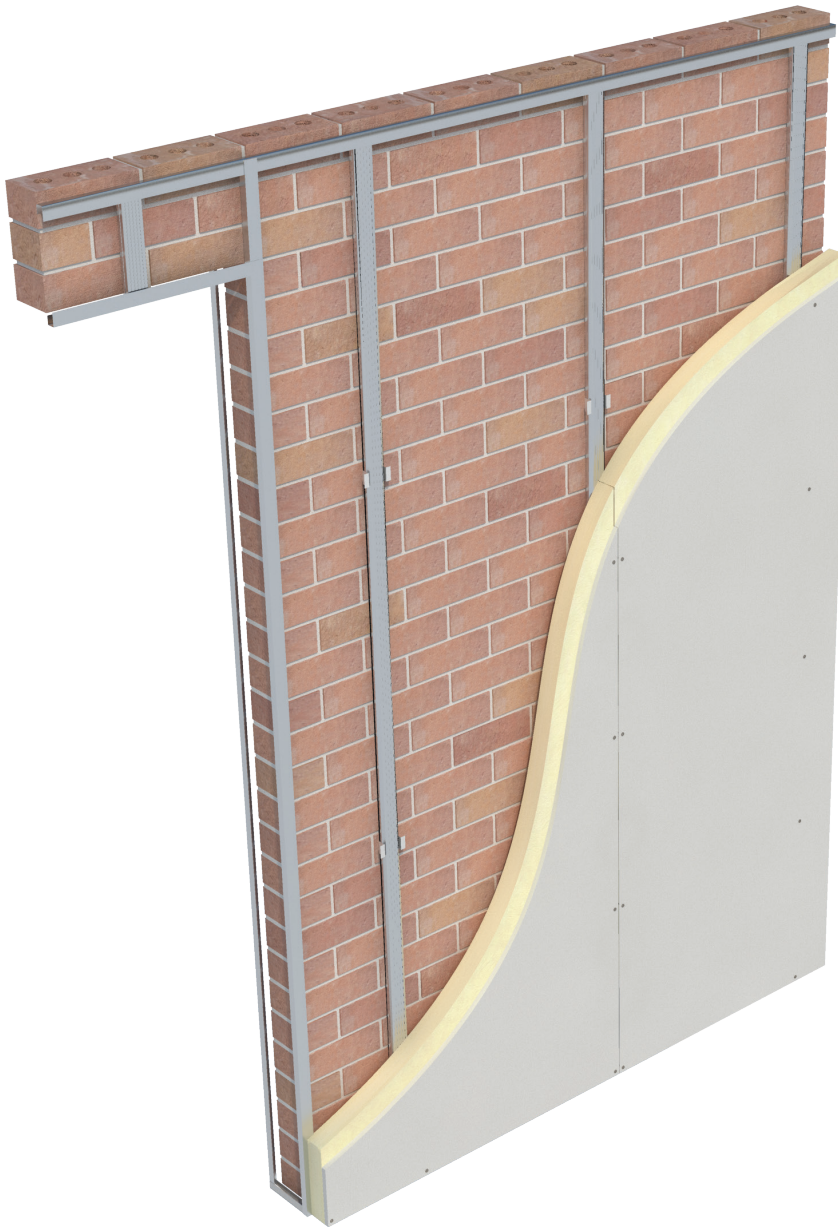
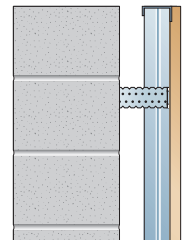
Fix each leg of bracket to SWL507 Wall Liner using Speedline Wafer Head Screws. Should leg of bracket extend beyond face of liner, simply fold back to provide a flush surface.

Fix board lining at maximum 300mm centres to all perimeters and intermediate wall liner sections using the appropriate length of Speedline Drywall Screw. Refer to table on page 23 for board thickness/fixing length combination.

Fixtures

Medium to heavy fixtures such as heating units, radiators, shelving and cupboards can be supported by a plywood pattress incorporated within the framing cavity (refer to construction details). For all other types of fixtures please contact enquiries@speedlinedrywall.co.uk for further assistance.

SPEEDLINE WALL LINER SYSTEM



Speedline Thermal Laminate Board provides a thermal insulation solution in a single application and is suitable for use with Speedline Wall Liner System.

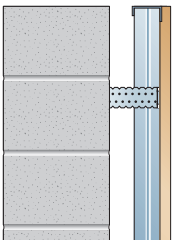
Speedline Thermal Laminate Board in conjunction with Speedline Wall Liner System will assist you to meet or upgrade to the current Building Regulations and avoid the risk of condensation. Locating the thermal insulation layer on the internal side of the structure is more responsive to heating conditions resulting in the ambient internal temperature of a building becoming comfortable quicker whilst reducing thermal bridging through the structure.

The table below provides details on U-Values ($\text{W/m}^2\text{K}$) achievable with the stated board thickness and masonry background. Please contact enquiries@speedlinedrywall.co.uk for further assistance and U-Value calculations.

Speedline Masonry Walls - Mechanical fix onto Speedline Wall Liner System

Board Thickness	Thermal Resistance ($\text{M}^2\text{K/W}$)	U-Value ($\text{W/m}^2\text{K}$)
62.5mm	2.31	0.34
72.5mm	2.79	0.29
82.5mm	3.30	0.26
92.5mm	3.70	0.23

The above U Value calculation is based upon a solid 215mm masonry wall with Speedline Thermal Laminate Board being mechanically fixed into Speedline Wall Liner System.

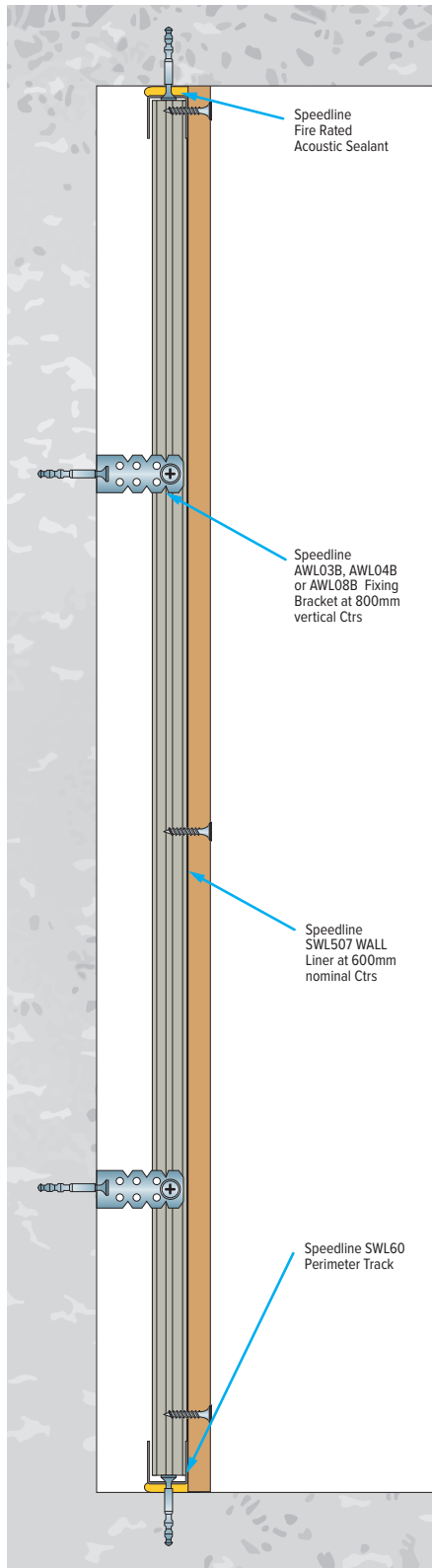


WALL LINING SYSTEMS

SPEEDLINE WALL LINER SYSTEM

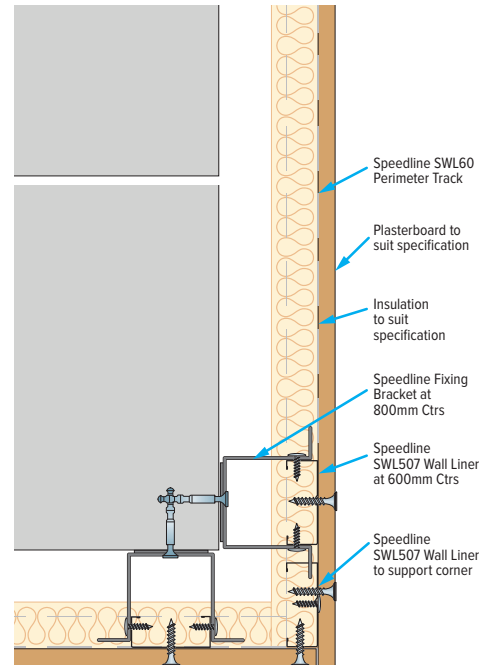
WALL LINER

HEAD, FLOOR & BRACKET



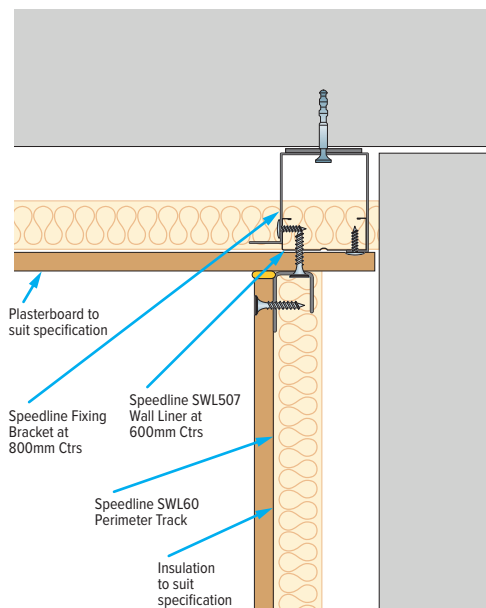
WALL LINER

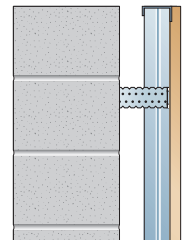
EXTERNAL CORNER



WALL LINER

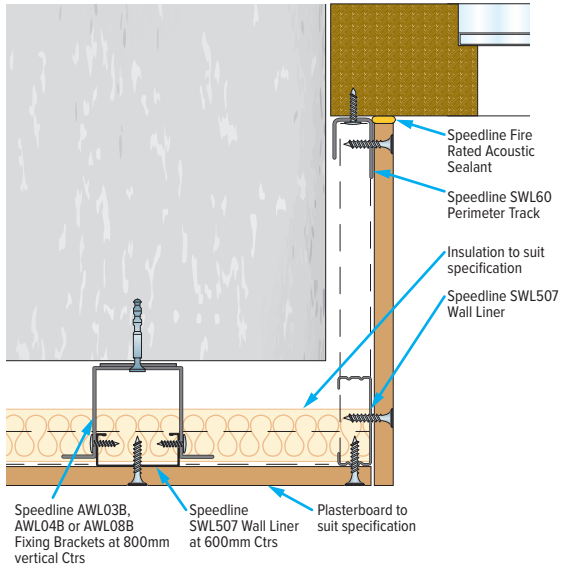
INTERNAL CORNER





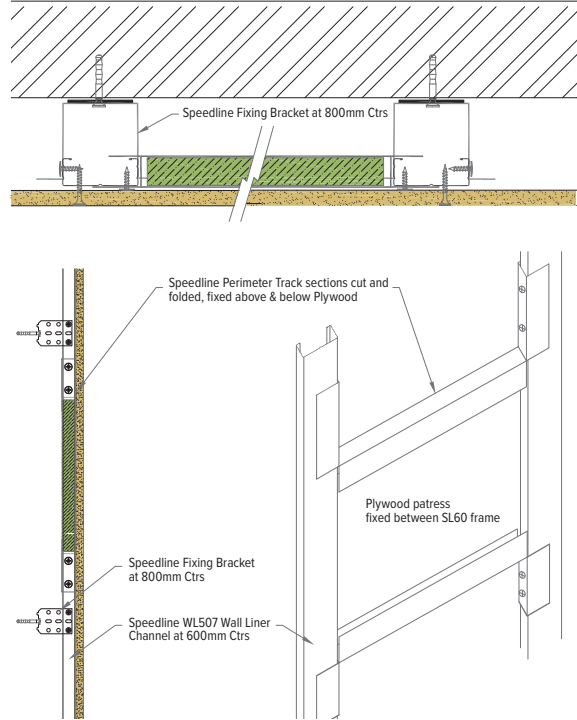
WALL LINER

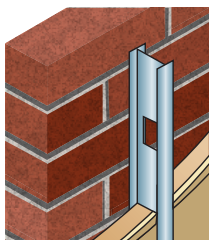
WINDOW/DOOR REVEAL



WALL LINER

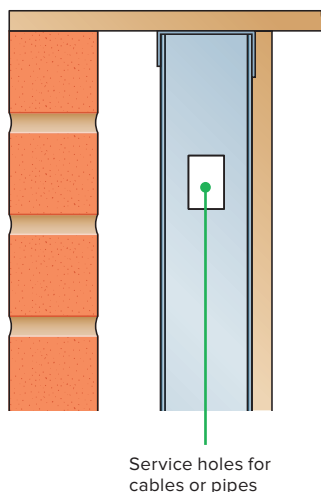
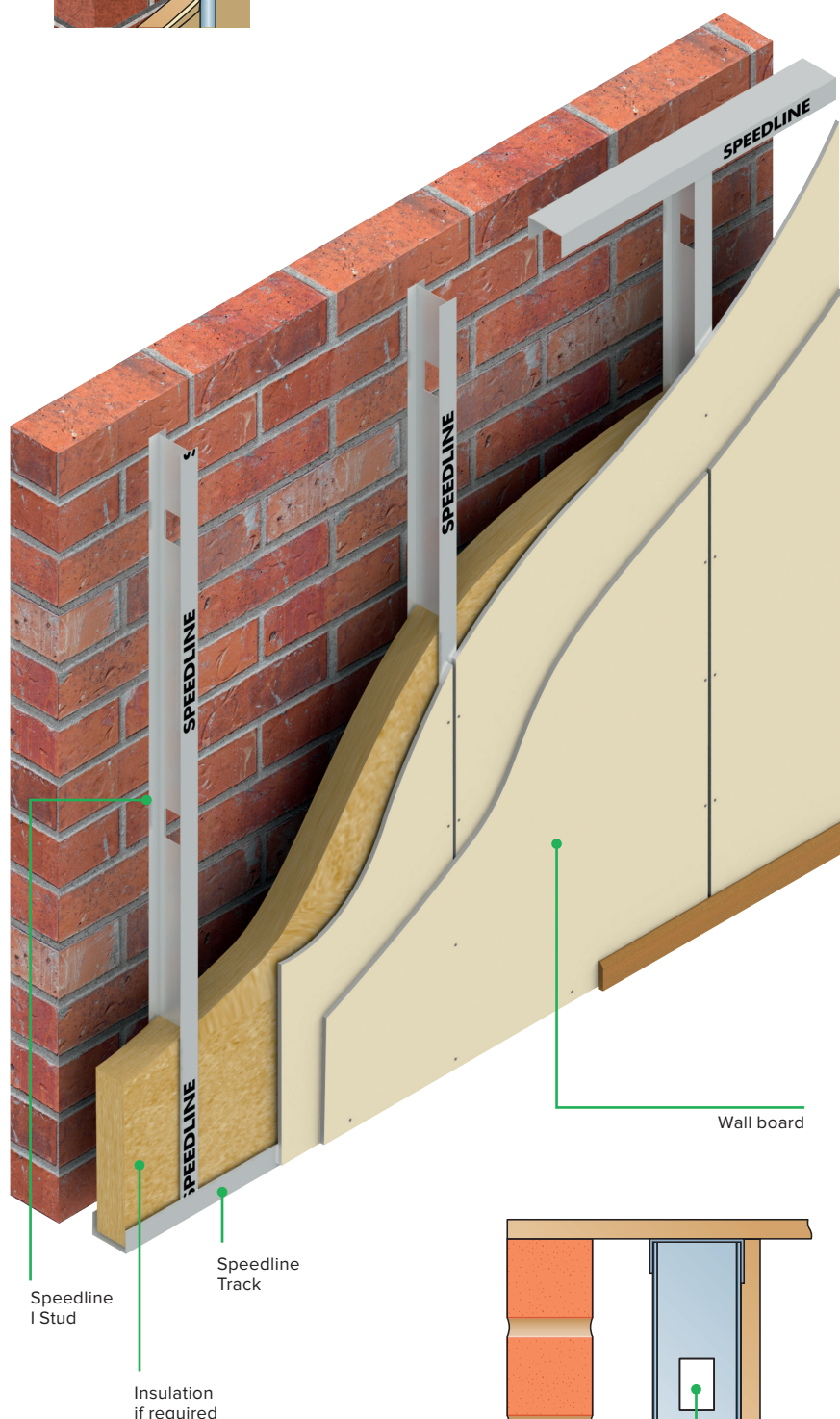
PLYWOOD PATRESS





WALL LINING SYSTEMS

SPEEDLINE INDEPENDENT WALL LINING SYSTEM



Benefits

- Speedline Independent Wall Lining System provides a cavity for services to be routed through.
- Speedline Independent Wall Lining System offer a range of I stud widths of 50mm, 60mm, 70mm, 92mm & 146mm to achieve a wide range of height requirements up to 7.2 metres without any additional bracing to structure.
- Speedline systems are suitable for fixing all types of plasterboard including Speedline Thermal Laminate Boards.
- Independent of structure although it can be braced back for greater heights.
- Speedline stud holds insulation to improve levels of sound and thermal insulation.

Speedline Independent Wall Lining System has been designed to provide a lining solution that is totally free of the substrate. It can be used where other lining solutions such as plaster or direct bond are unsuitable.

Speedline I Studs are friction fitted within Speedline tracks at nominal 600mm centres. Insulation can be incorporated within the framework cavity to improve sound and thermal insulation along with the correct type of gypsum plasterboard.

Fix board lining at maximum 300mm centres to all perimeters and intermediate I studs using the appropriate length of Speedline Drywall Screw. Refer to table on page 23 for board thickness/fixing length combination.

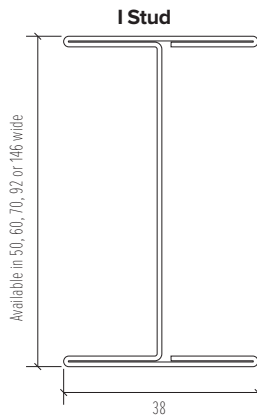
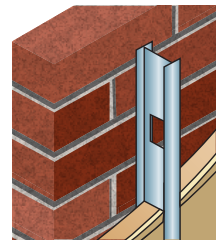
Prior to installing Speedline Independent Wall Lining System within older buildings, ensure the substrate is sound and free of any damp.

Please contact
enquiries@speedlinedrywall.co.uk
 for further assistance.

Sectors


- Residential
- Healthcare
- Education
- Commercial
- Retail
- Student Accommodation
- RMI

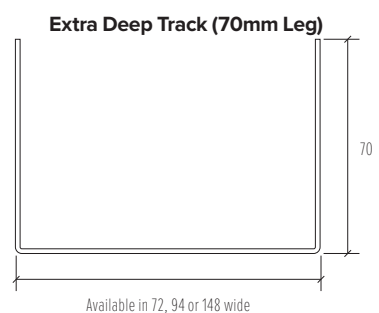
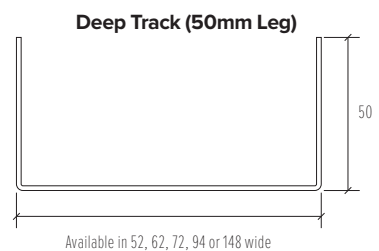
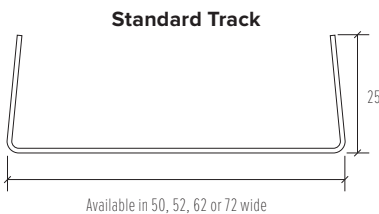
SPEEDLINE INDEPENDENT WALL LINING SYSTEM



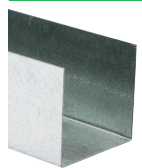
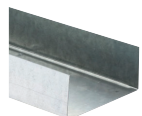
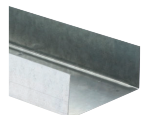
I STUD


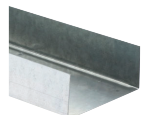
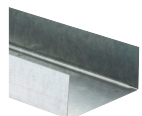
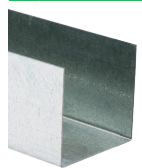


	Product Code	Product Description	Stock Lengths Metre	Weight per Length Kgs
	PI50	50mm I Stud x 0.6mm, flange dimensions 38mm	2.70 3.00 3.60	2.01 2.24 2.69
	PI60	60mm I Stud x 0.6mm, flange dimensions 38mm	3.60 4.20	2.82 3.30
	PI70	70mm I Stud x 0.7mm, flange dimensions 38mm	3.60 4.20	3.56 4.15
	PI92	92mm I Stud x 0.9mm, flange dimensions 38mm	3.60 5.00 6.00	4.59 6.37 7.65
	PI146	146mm I Stud x 0.9mm, flange dimensions 38mm	3.60 5.00 6.00	5.65 7.86 9.43

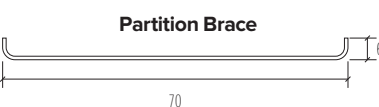
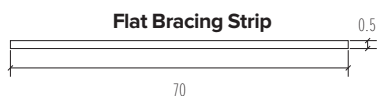




TRACK

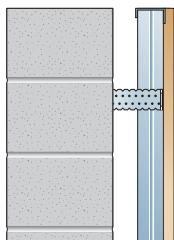


	Product Code	Product Description	Stock Lengths Metre	Weight per Length Kgs
	SPT52	52mm Track (25mm leg) x 0.5mm	3.00	1.13
	PT62	62mm Track (25mm leg) x 0.5mm	3.00	1.25
	SPT72	72mm Track (25mm leg) x 0.5mm	3.00	1.41
	SPT94	94mm Track (32mm leg) x 0.5mm	3.00	1.81
	SPT148	148mm Track (32mm leg) x 0.5mm	3.00	2.40
	PEDT62	62mm Deep Track (50mm leg) x 0.5mm	3.00	1.86
	SPEDT72	72mm Deep Track (50mm leg) x 0.5mm	3.00	1.98
	SPEDT94	94mm Deep Track (50mm leg) x 0.5mm	3.00	2.16
	SPDT148	148mm Deep Track (50mm leg) x 0.5mm	3.00	2.83
	SPXDT72	72mm Extra Deep Track (70mm leg) x 0.7mm	3.00	3.43
	SPXDT94	94mm Extra Deep Track (70mm leg) x 0.7mm	3.00	3.79
	SPXDT148	148mm Extra Deep Track (70mm leg) x 0.7mm	3.00	4.68

BRACING STRIP & PARTITION BRACE



	Product Code	Product Description	Stock Lengths Metre	Weight per Length Kgs
	FS24	Flat Bracing Strip 70 x 0.5mm	2.40	0.80
	PB24	Partition Brace 70 x 6 x 0.7mm	2.40	1.08



WALL LINING SYSTEMS

SPEEDLINE INDEPENDENT WALL LINING SYSTEM

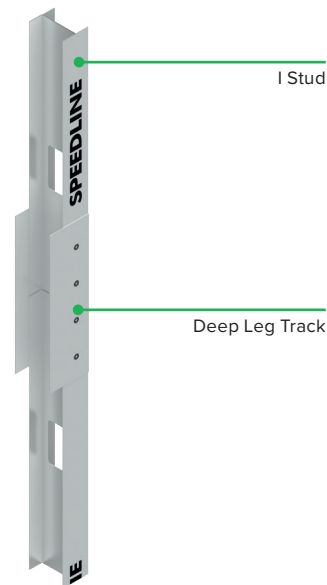
Speedline Independent Wall Lining maximum heights I Stud at 600mm centres

Maximum Height Table		I Stud Width mm	Max Height m	Nom Weight kg/m ²	Nom Width mm
	MD	50	2.4*	10	190
		60	2.7*	11	200
		70	3.0*	11	210
		92	4.5*	12	230
		146	6.9*	12	286
	SD	50	2.7*	19	203
		60	3.3*	20	213
		70	3.9*	20	223
		92	5.4*	21	243
		146	7.2*	21	299

*Denotes maximum unbraced height for further assistance on reduced stud centres and bracing back to structure, please contact enquires@speedlinedrywall.co.uk

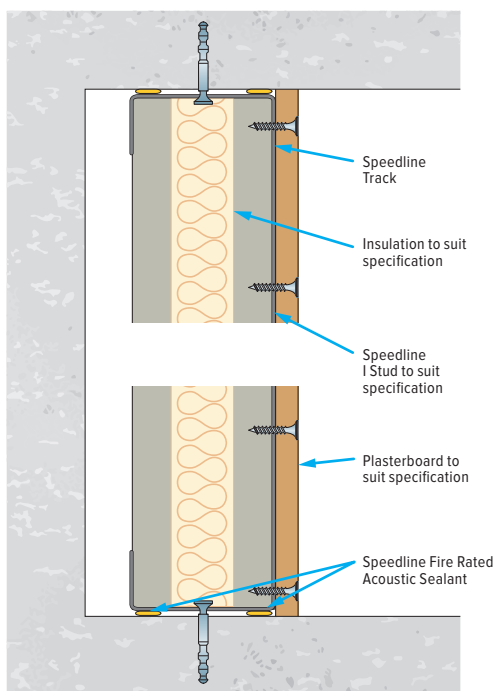
Splicing Speedline I Studs

Speedline I studs can be spliced together to create longer lengths using a 600mm length of the appropriate sized Speedline Deep Track and fixed with four Speedline Wafer Head Screws to each flange (see detail below).



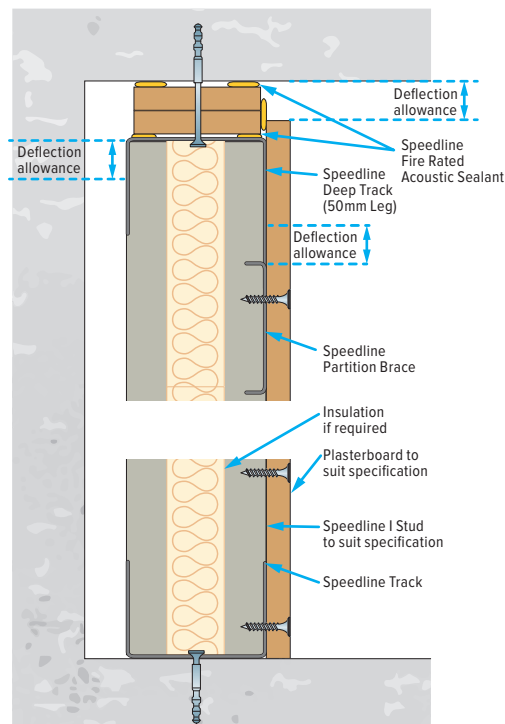
I STUD WALL LINING

HEAD AND FLOOR

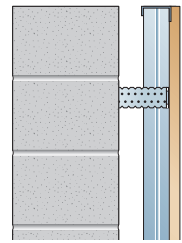


I STUD WALL LINING

DEFLECTION HEAD

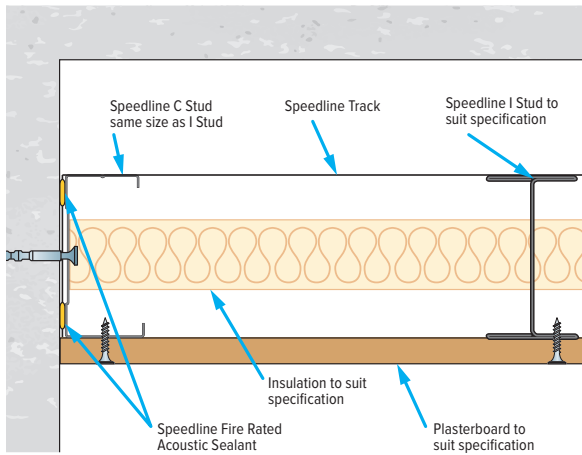


SPEEDLINE INDEPENDENT WALL LINING SYSTEM



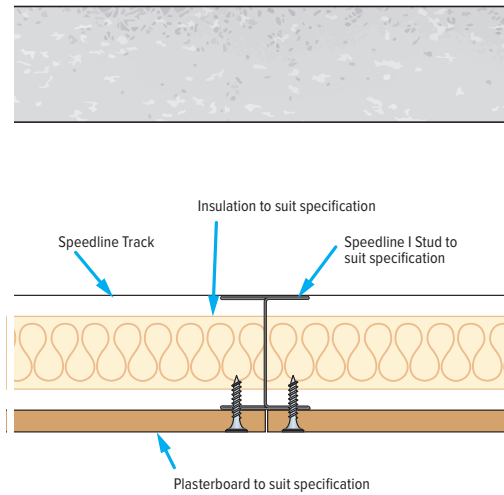
I STUD WALL LINING

WALL ABUTMENT



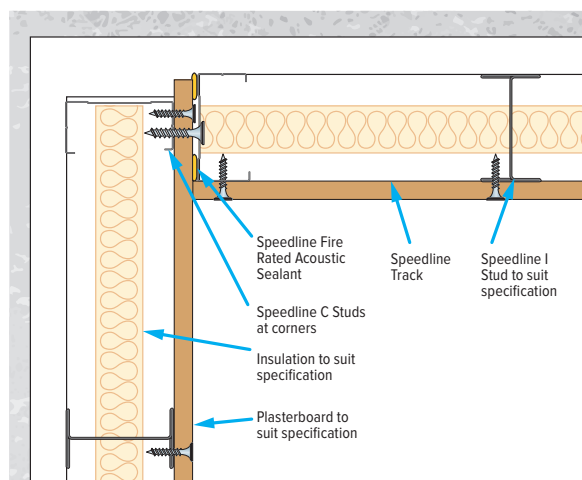
I STUD WALL LINING

BOARD JOINT



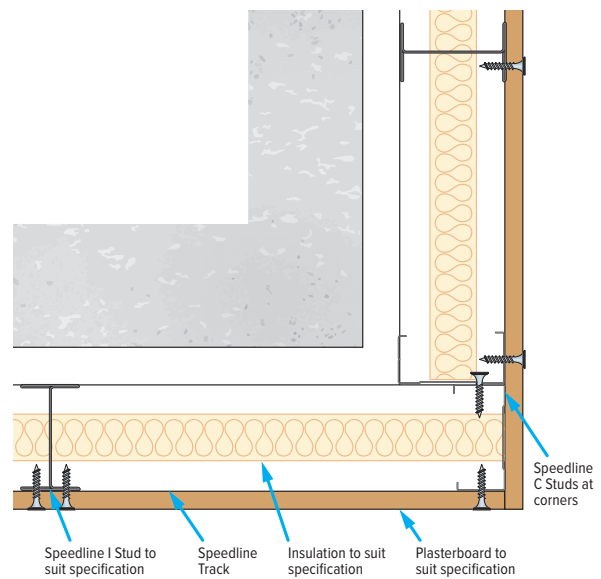
I STUD WALL LINING

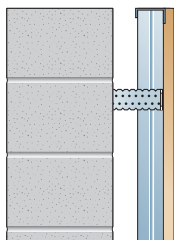
INTERNAL CORNER



I STUD WALL LINING

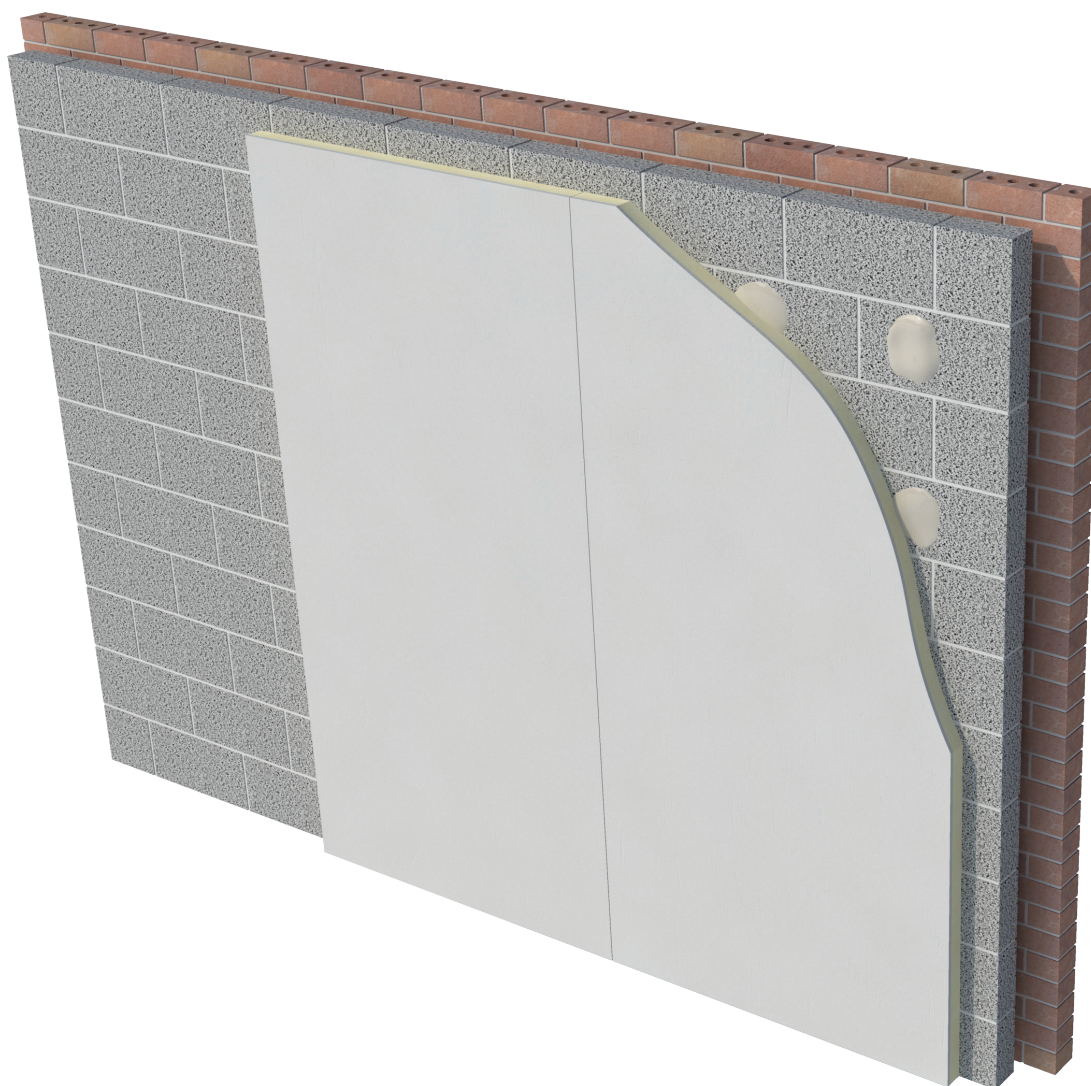
EXTERNAL CORNER





WALL LINING SYSTEMS

SPEEDLINE DIRECT BOND SYSTEM



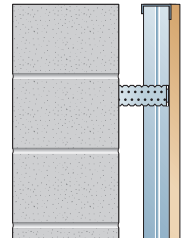
Benefits

- Minimal loss of room space due to a typical cavity space of between 10mm and 25mm Maximum.
- Small surface defects can be hidden within the cavity formed by Speedline Drywall Adhesive dabs.
- Services can be incorporated behind the plasterboard, which reduces level of chasing out. (All Electrical & Plumbing guides should be adhered to).
- Speedline Thermal Laminate Board can be used to enhance thermal performance (see table on page 108 for further details).

Sectors

- Residential
- Healthcare
- Education
- Commercial
- Retail
- Student Accommodation
- RMI

WALL LINING SYSTEMS

SPEEDLINE DIRECT BOND SYSTEM**Speedline Direct Bond System**

Speedline Drywall Adhesive will fix a wide range of gypsum plasterboards to most masonry backgrounds. The adhesive installation instructions should be followed while ensuring the masonry background is completely dry and free of contaminants. Additional Speedline Nylon Hammer Screws should be used to prevent early collapse of the board in the event of a fire. All perimeter joint locations should be sealed with Speedline Fire Rated Acoustic Sealant to achieve an airtight seal.

If considering using Speedline Direct Bond System onto a solid masonry wall then consideration must be given towards the condition of the wall and measures taken to ensure the external wall is fully weatherproof to prevent moisture penetration from occurring.

Speedline Drywall Adhesive is not suitable for applying foil backed plasterboards; this type of board should only be mechanically fixed onto a framing solution such as Speedline Wall Liner System.

Boards should only be applied to a maximum height of 3 metres whilst small rips should be avoided.

Speedline Thermal Laminate boards can be adhered using Speedline Drywall Adhesive, but will require additional mechanical fixing using Speedline Nylon Hammer Screws to ensure board stays in place in a fire situation. Use two fixings per board positioned at mid-height within the tapered edge, fixings should be installed after the dabs have set.

For further assistance and advice on the use of Speedline Direct Bond System, please contact enquiries@speedlinedrywall.co.uk

Preparation

Linings can be direct fixed to low, medium, and high suction masonry, pre-cast and in-situ concrete, ensuring all release agents, contaminants and dust have been suitably treated or removed.

A suitable, proprietary bonding agent should be used when applying Speedline Drywall Adhesive onto concrete substrates, bonding agent to be applied in bands to correspond with dab centres.

Ensure all air paths & gaps in substrate are sealed, particularly at corners & junctions. Any perpendicular joints in block work should be filled to improve acoustic performance and heat loss.

Background should be checked for alignment and allowance for boards to pass over high spots on the masonry.

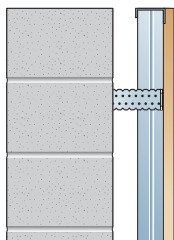
Mark guidelines on the soffit and floor, allowing for irregularities and establishing the new plumb wall plane.

Work out the position of the first board application and mark wall accordingly, allowing for board rips of less than 300mm to be eliminated.

Perimeter of Room

When installing boards a continuous band of Speedline Drywall Adhesive should be applied around the wall perimeter, at window/door openings & sockets, to improve the airtightness and reduce the effects of cold convection currents. This is particularly important with Speedline Thermal Laminate boards as it may reduce the performance of the wall construction. (Continuous bands should be applied as each board is being fixed).

If applied to an exterior wall, any Interior partitions abutting the direct bond system should be fitted first and the lining taken up to the plasterboard faces. This will aid & reduce flanking transmissions.



WALL LINING SYSTEMS

SPEEDLINE DIRECT BOND SYSTEM

Direct Bonding Dabs within field of plasterboards

Speedline Drywall Adhesive dab should be 250mm long and between 50mm & 75mm wide with a minimum dab thickness of 10mm and up to 25mm thick. Apply enough adhesive for one board at a time to give a minimum area of contact between board and substrate of 20%. Refer to table below for dab centres in relation to board thickness and width.

Once Speedline Drywall Adhesive has been applied, offer up the plasterboard and press firmly into place. Ensure board is in a plumb position and not resting on the floor, offcuts of board can be used as packing pieces, remove once dabs have set.

Speedline Thermal Laminate Boards require secondary mechanical fixing using two Speedline Nylon Hammer Screws per board, positioned at mid-height within the tapered edge. Fixings should be of a sufficient length to penetrate through board, dab and into the background by at least 25mm. Fixings to be installed once the dabs have set.

Adhesive dab centres for gypsum plasterboards and Speedline Thermal Laminate Boards

Thickness/ Type of Board	Width (mm)	Adhesive Centres (mm)	Rows of dabs per board
9.5mm	900	450	3
9.5mm	1200	400	4
12.5mm	1200	600	3
All Laminates	1200	600	3

General Applications

Speedline Direct Bond System must be installed in accordance with Speedline recommendations and the recommendations of BS 8212:1995 and BS 8000: Part 8:1994.

Speedline Thermal Solutions

The table below provides details on U-Values ($\text{W/m}^2\text{K}$) achievable with the stated board thickness and masonry background. Please contact enquiries@speedlinedrywall.co.uk for further assistance and U-Value calculations.

Masonry Cavity Wall

Board Thickness	Thermal Resistance ($\text{m}^2\text{K/W}$)	U-Value ($\text{W/m}^2\text{K}$)
62.5mm	2.31	0.30
72.5mm	2.79	0.26
82.5mm	3.30	0.23
92.5mm	3.70	0.21

The above U Value calculation is based upon a masonry cavity wall (103mm facing brick – 50mm clear cavity – 100mm lightweight blockwork 0.22 W/mK) with Speedline Thermal Laminate Board being directly bonded to the internal surface with Speedline Drywall Adhesive.